



WASHINGTON STATE
UNIVERSITY

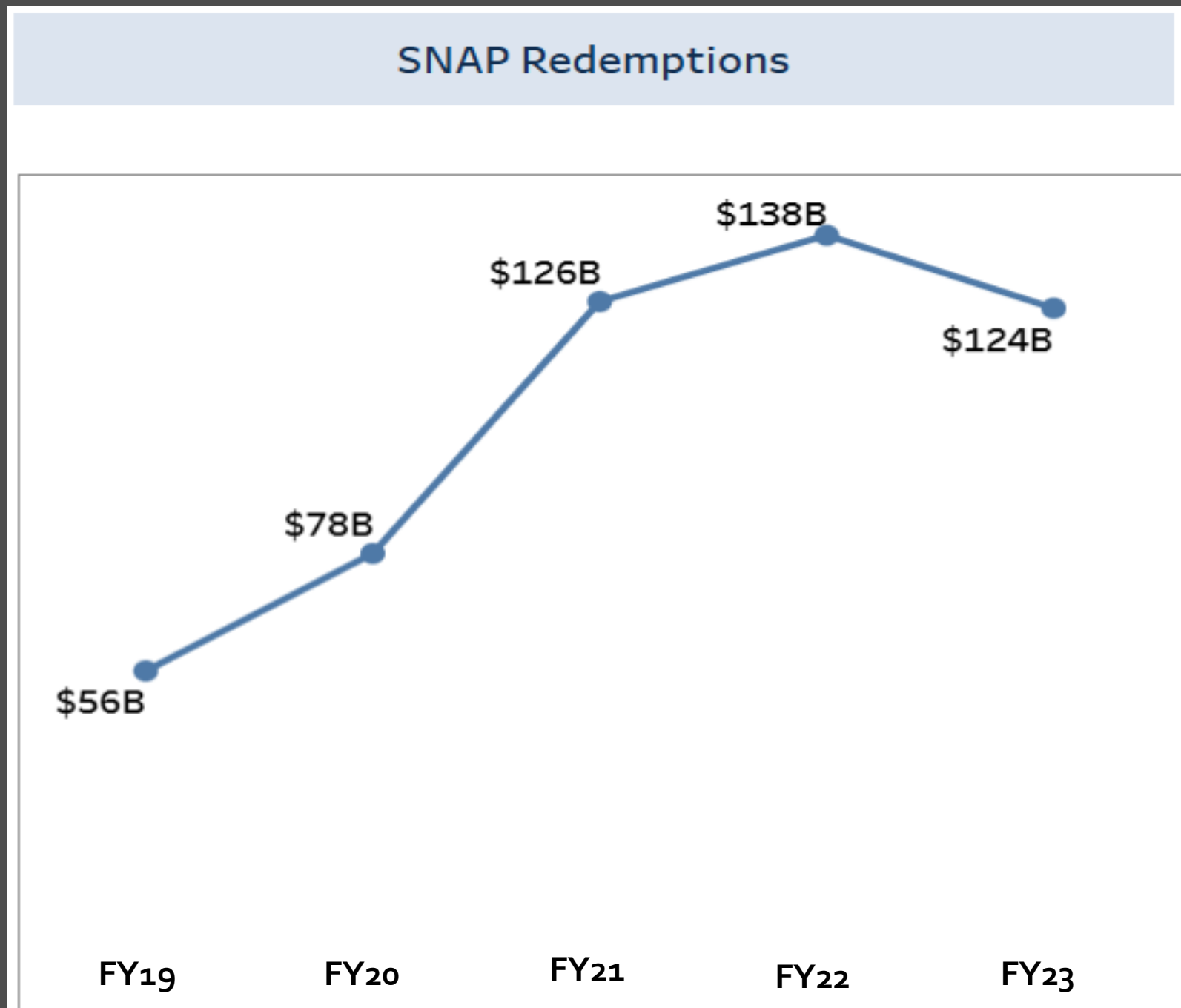
SNAP-Ed Statewide Retail Food Access WSU Extension

Allie Moore

Allison.Moore2@wsu.edu

National SNAP Redemptions 2019-2023

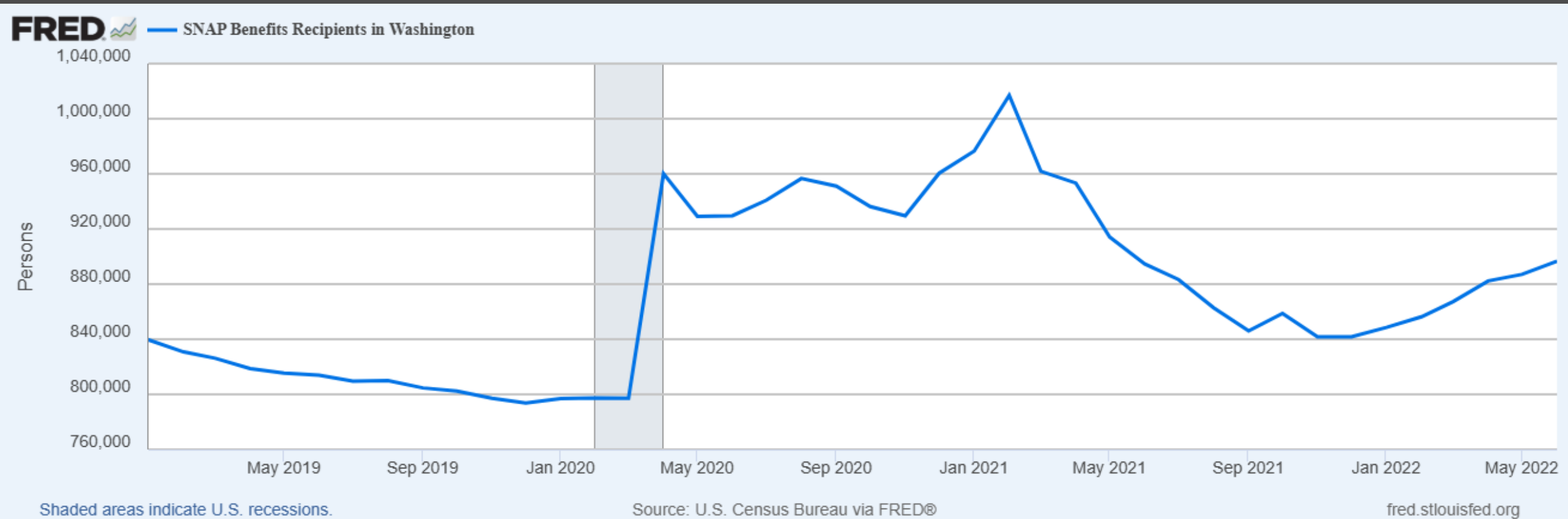
- **Emergency allotments (EAs)** increased SNAP benefit amounts (2020-2023).
- **Adjustments** increased the maximum SNAP benefit ~35% total (2021 and 2022)



SNAP Participants in Washington 2019-2022

Snapshot in 2022:

- **341,122** households were enrolled in SNAP in Washington
- **\$1.1 billion** spent at retailers

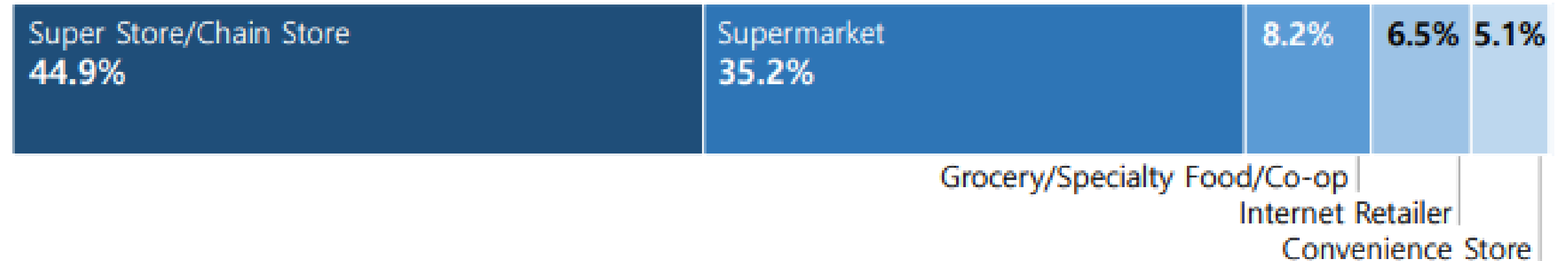


Where is SNAP used in Washington?

- In 2022, 80% of benefits were spent at superstores & supermarkets
- Over 90% of clients shopped at these retailers

Statewide Basic Food Expenditures by Retailer Category

Calendar Year 2022, Total Dollars = \$1,159,105,648



Learn more from DSHS Report: [Where are basic food benefits used in WA?](#)



WASHINGTON STATE
UNIVERSITY

SNAP-Ed Statewide Retail Food Access WSU Extension

Allie Moore
Allison.Moore2@wsu.edu

+Bonus Content!

Some race/ethnicity groups were overrepresented in households receiving Basic Food benefits

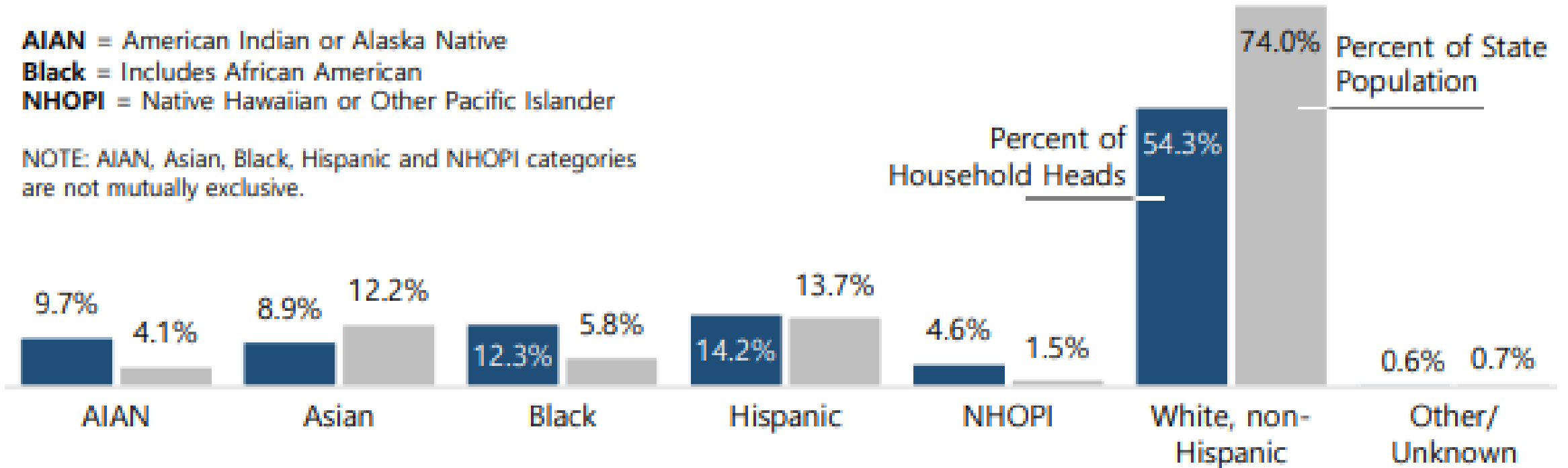
Race / Ethnicity of Basic Food Household Heads and of Washington State

AIAN = American Indian or Alaska Native

Black = Includes African American

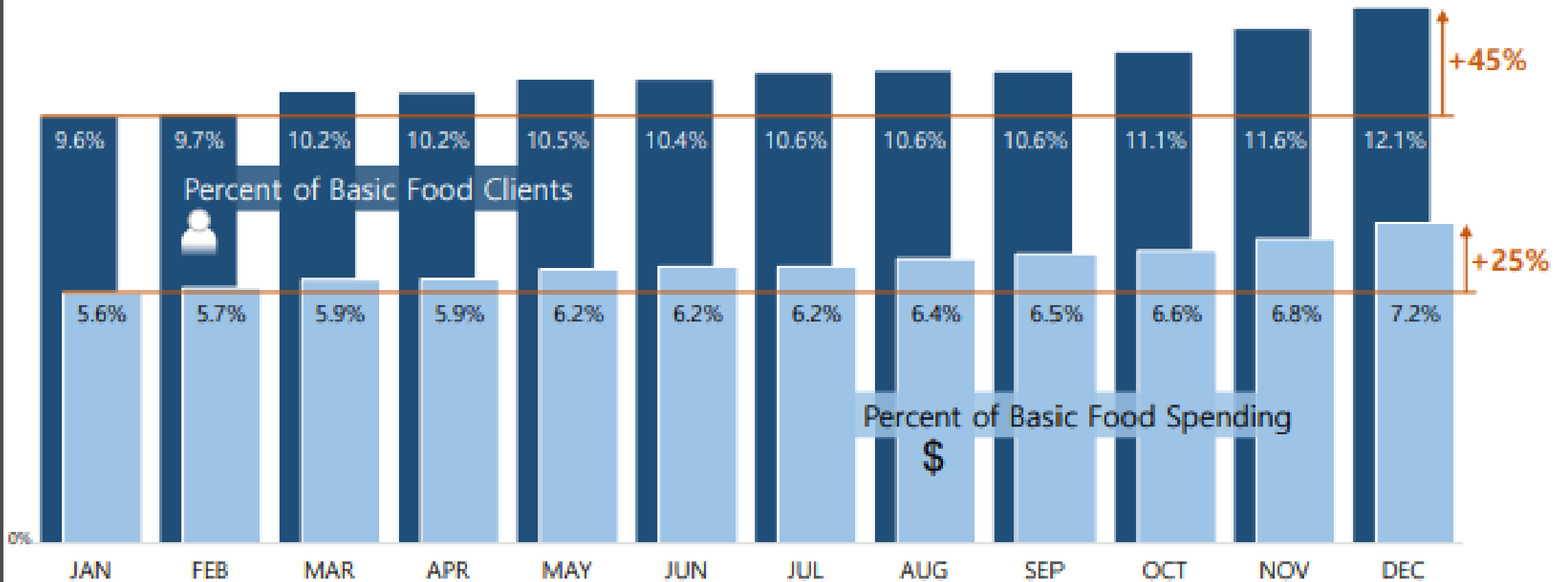
NHOPI = Native Hawaiian or Other Pacific Islander

NOTE: AIAN, Asian, Black, Hispanic and NHOPI categories are not mutually exclusive.

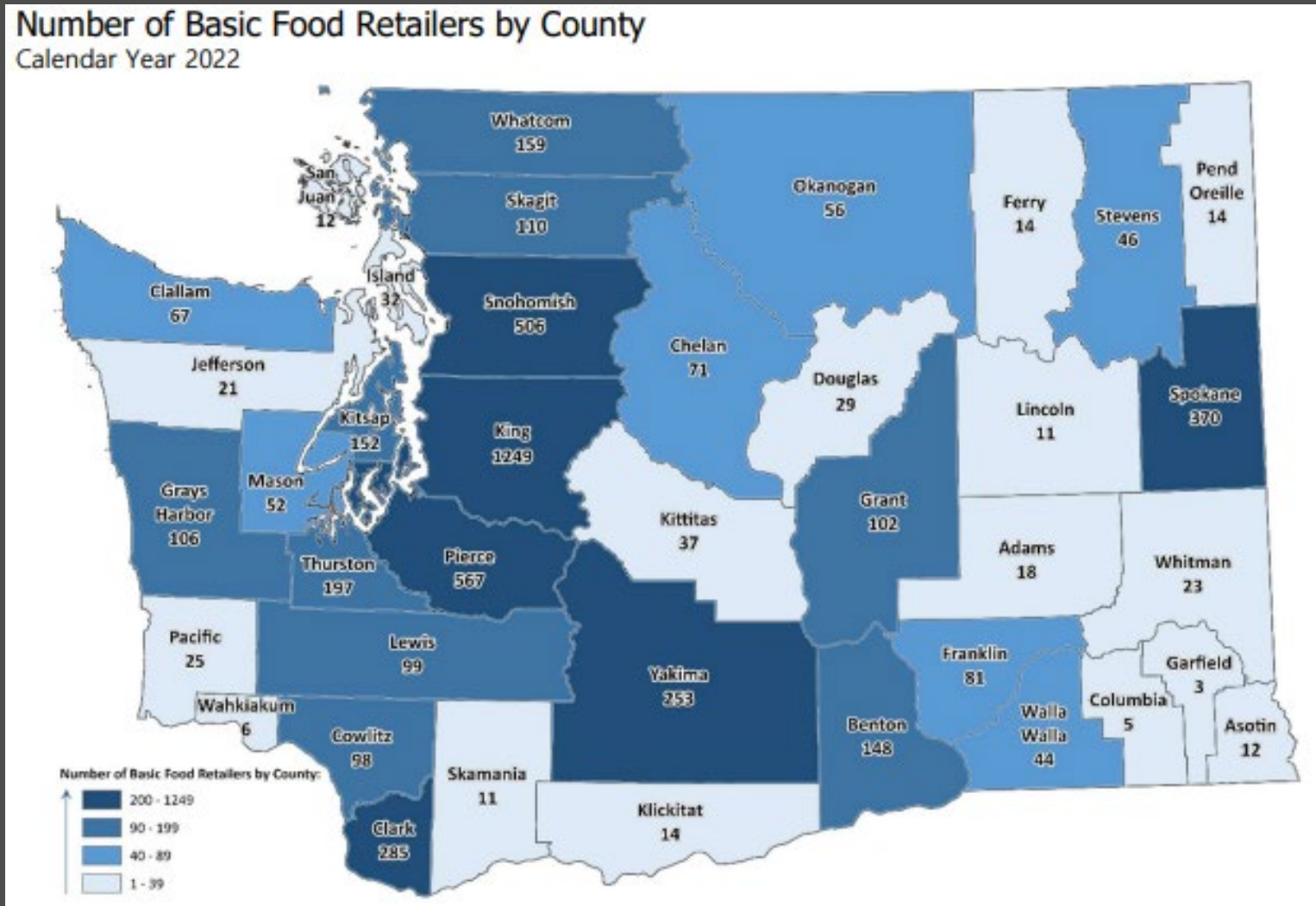


Internet retail accounted for only 6.5% of Basic Food spending in CY 2022 but grew steadily.

Change in Basic Food Internet Retail, January to December 2022



Counties varied substantially in the number of available Basic Food retailers available.





WASHINGTON STATE
UNIVERSITY

SNAP-Ed Statewide Retail Food Access WSU Extension

Allie Moore

Allison.Moore2@wsu.edu