

# Safety at Public Events



Jeremy Ketchum / Al Wurth



Washington State Department of  
**Labor & Industries**

A wooden crate filled with fresh produce including basil, tomatoes, and berries. The crate is the central focus, with various vegetables and fruits spilling out of it. The text 'Farmer's Market' is stenciled on the side of the crate.

# Safety at Public Events Like

Farmer's  
Market

Presenter:

Created By: Al Wurth, EMT



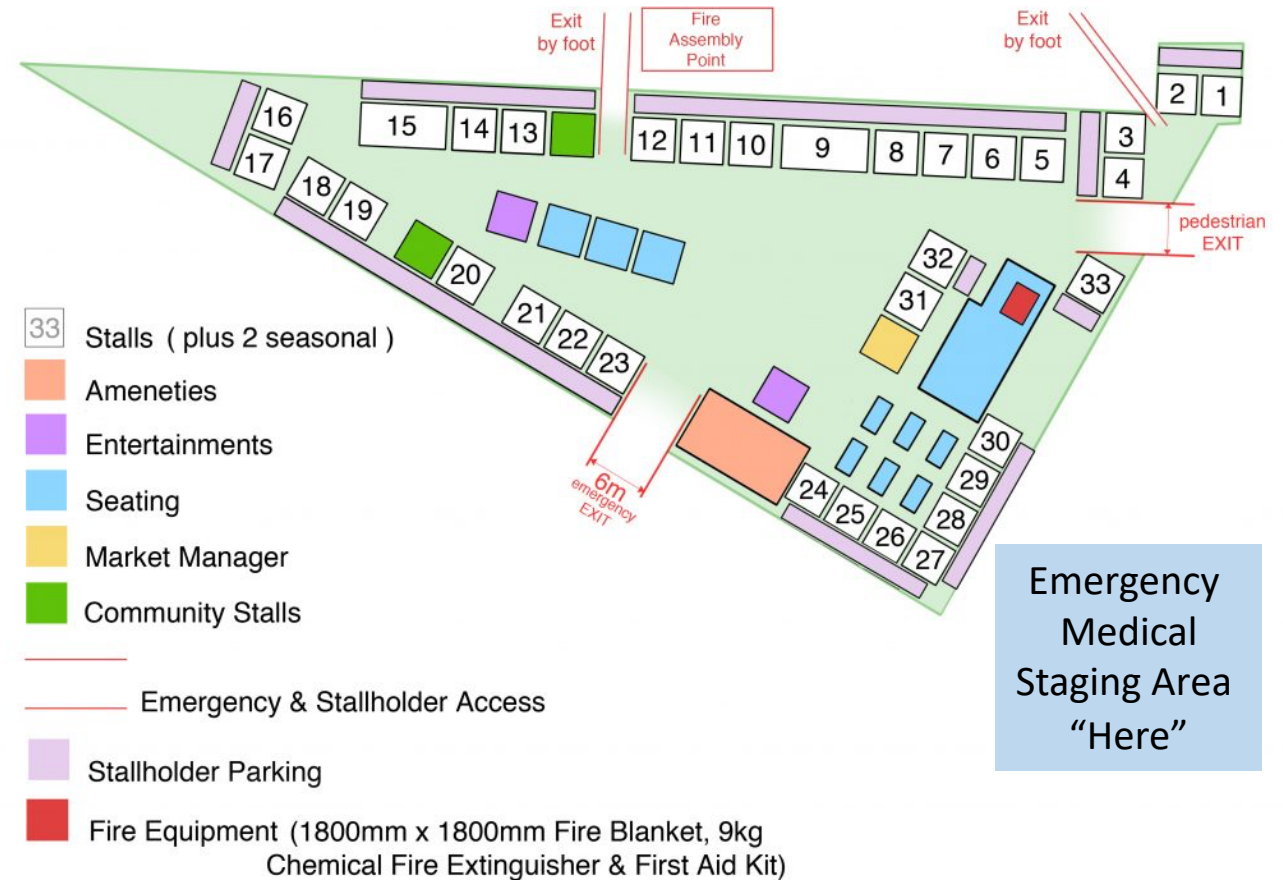


# Washington State L&I

- RCW [49.17.060](#)
- **Employer—General safety standard—Compliance.**
- **Each employer:**
  - (1) Shall furnish to each of his or her employees **a place of employment free from recognized hazards** that are causing **or likely to cause serious injury or death to his or her employees**: PROVIDED, That no citation or order assessing a penalty shall be issued to any employer solely under the authority of this subsection except where no applicable rule or regulation has been adopted by the department covering the unsafe or unhealthful condition of employment at the workplace; and
  - (2) Shall comply with the rules, regulations, and orders promulgated under this chapter.

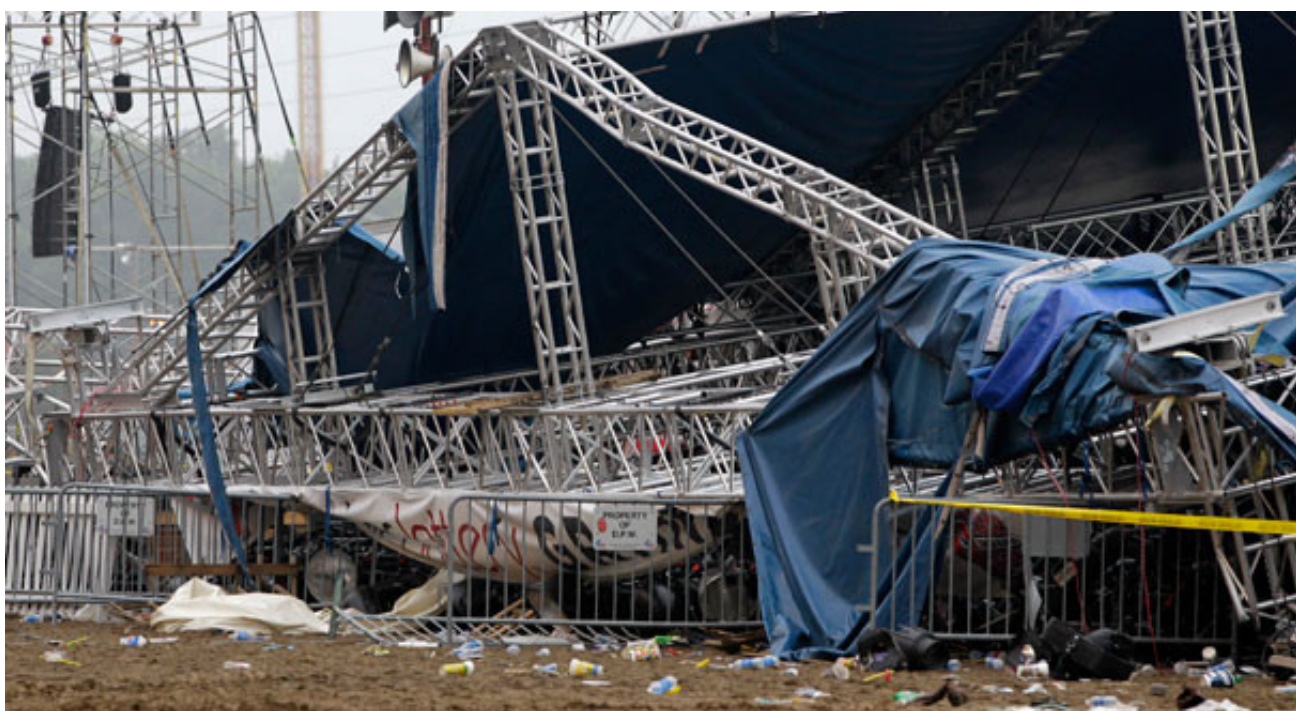
# To Do This We Must Do Planning

- Accident Prevention Plan (APP)
- Emergency Action Plan (EAP)
  - Emergency Evacuation Routes
  - Post Incident Staging Areas
- **Planning & Training:**
  - **Situational Safety Awareness**
  - **Being Proactive**
  - **Contact Phone Lists – Who To Call**
  - **Mapping**
  - **First Aid & Locations**
  - **Evacuation Routes**



Anything can happen at a public event like a Farmer's Market!

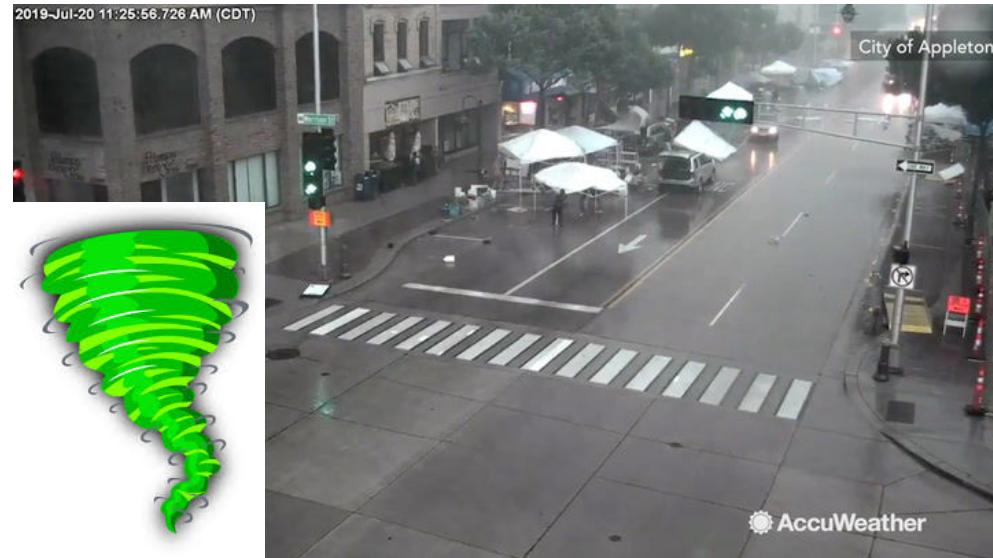






# Safety Hazards & Challenges At Public Events to Consider:

- Crowds
- Fire
- Emergency Medical Issues
- Electrical Hazards
- Traffic Related Issues
- Slips, Trips and Falls
- Evacuation Routes
- Weather – Related Emergencies
- Criminals & Terrorists



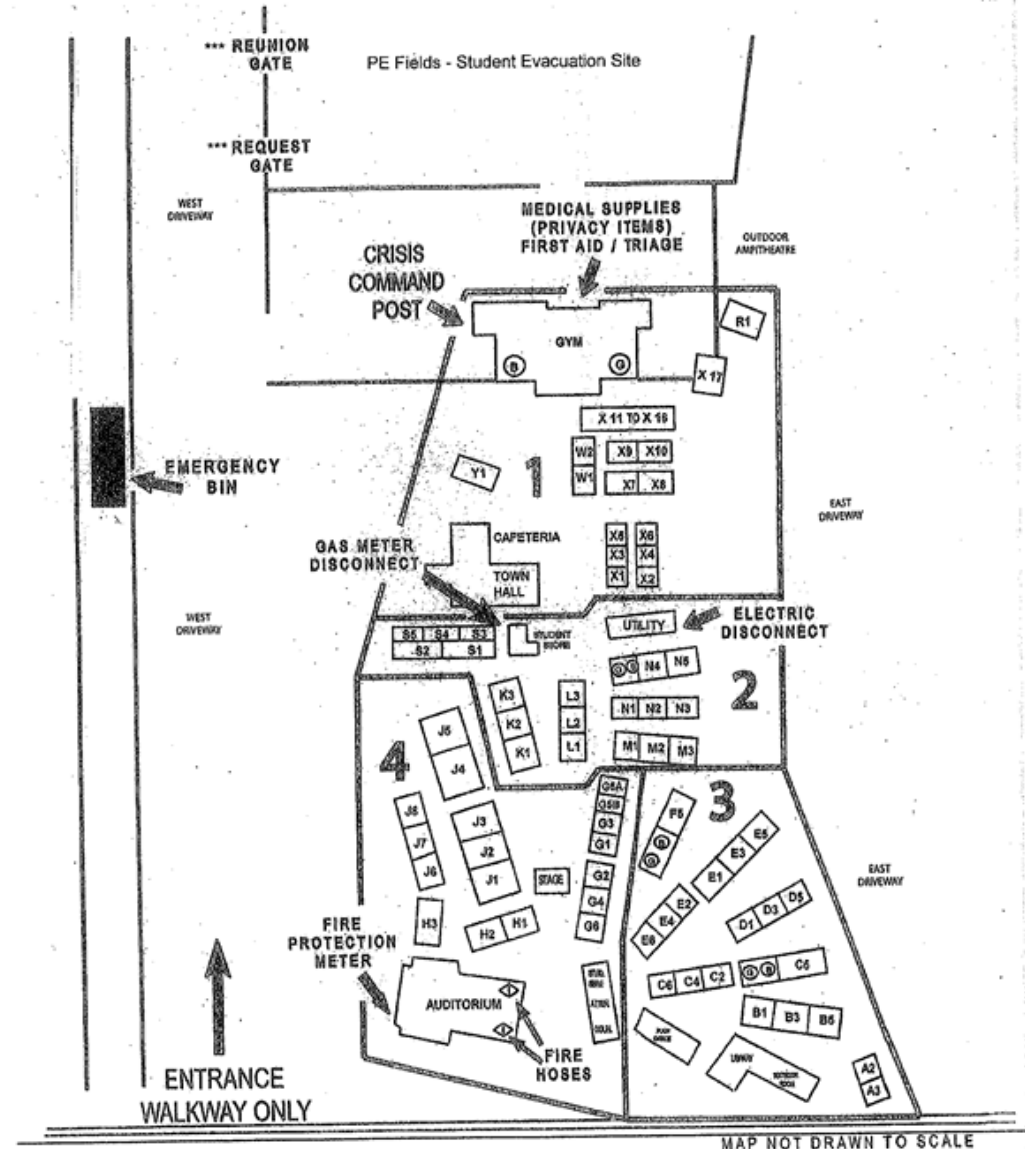
# Planning Takes Time!

PAUL NEWBERG CHARTER MIDDLE SCHOOL  
MATHEMATICS, SCIENCE & TECHNOLOGY MAGNET CENTER

Consider Learning and Using  
*The Incident Command System*

Establish Liaison-ships with  
Security, Law Enforcement,  
EMS, Fire and your vendors.

*Who's in charge?*



# Communications

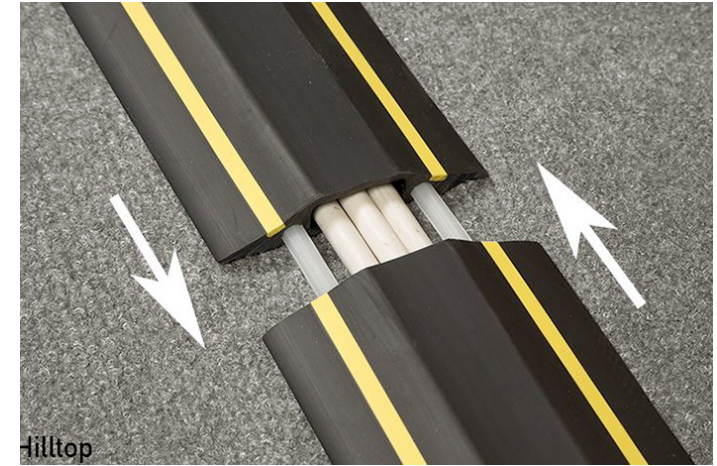
What are you using? Radios? Cell Phones?



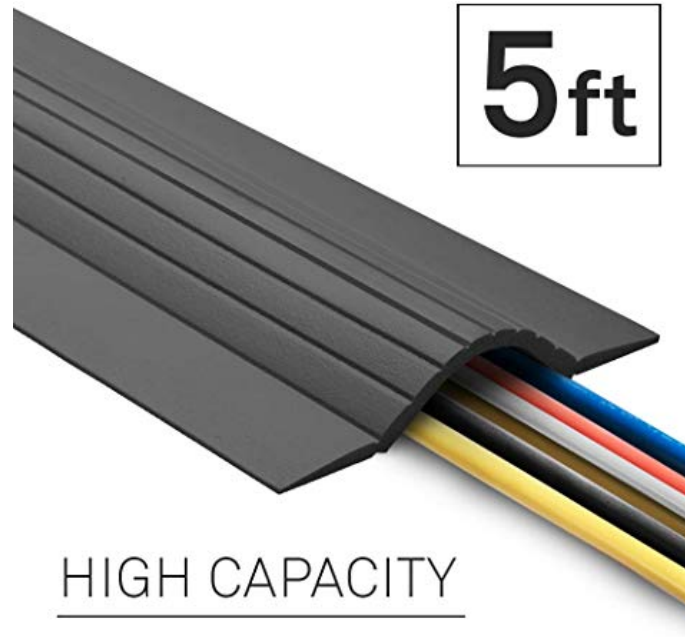
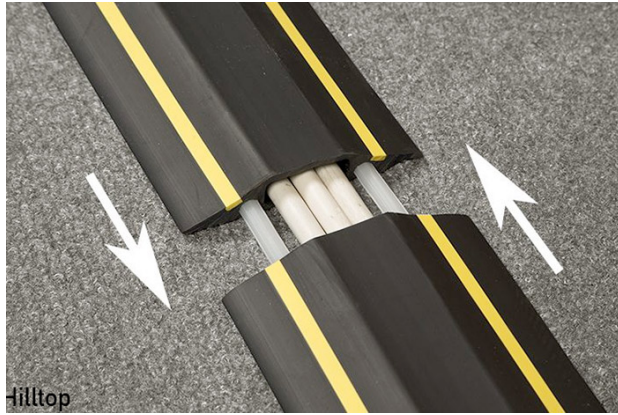
# Training in Safety / Situational Awareness



# Electrical Cords Need To Be Protected!

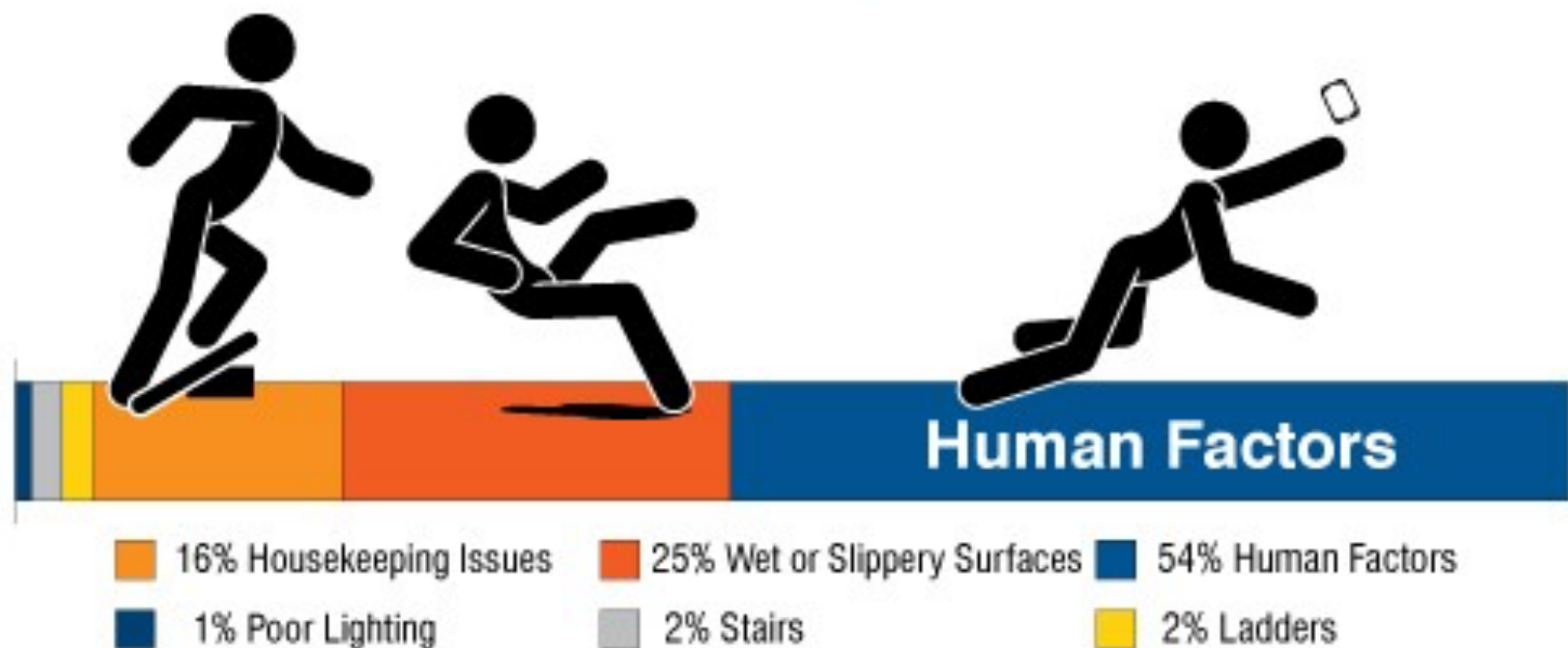


# Cheap Fixes and Remedies



**Skip Strips and Other**

## Most Frequent Factors in Slip, Trip & Fall Incidents

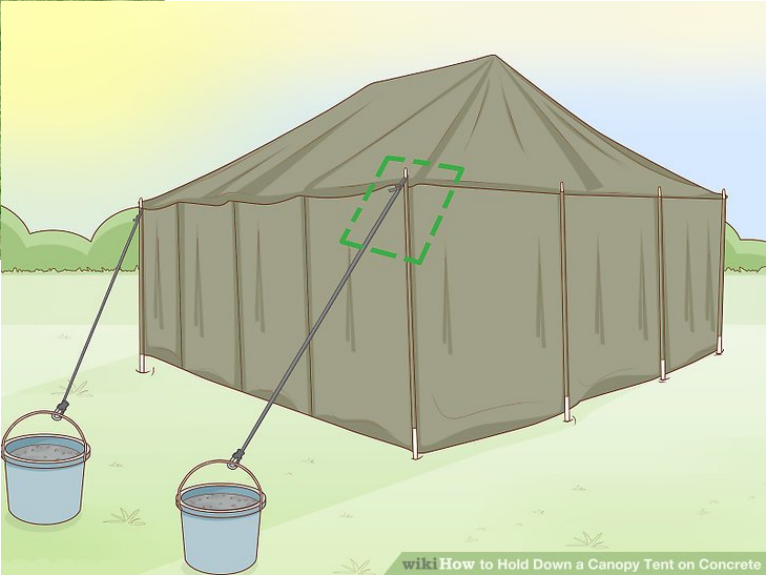


# Other Tripping Hazards





# Tent or Boot Tie Downs “These vs. This”





It Can Still Happen –  
Expect The Unexpected  
Try to plan on it.

# Other Considerations



# Farmer's Market Security



Having a **visible and active Security / Law Enforcement** presents coupled with other alert personnel, Helps hardening any “target” for consideration.

\* Many places also elect to use **plain clothes security agents** to augment the uniformed security or LEOs in order to intervene quickly thus exploiting their ability to be **undetected** by the bad guys.



# Facility(ies) Security – Removable Traffic Limiting Devices (RTLVs)

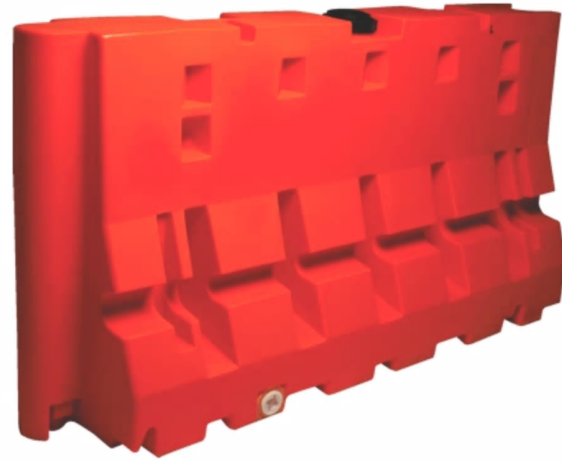
- Devices to **Harden Security = Physical Barriers**
- **Limits Vehicular Traffic** while at the same time allowing emergency access



# There Are Lots Of Options – Removable Barricades



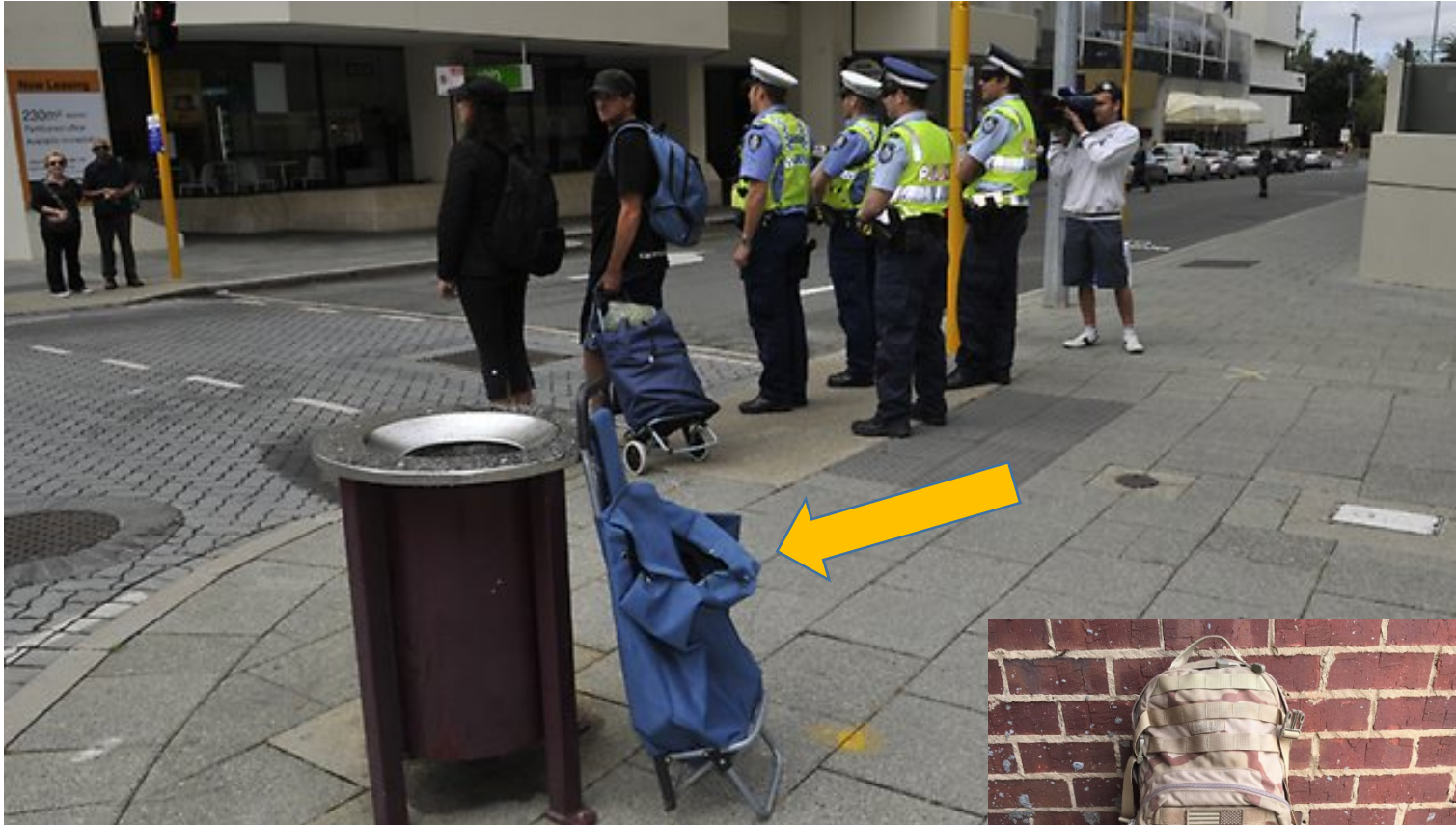
Removable Bollards



Water Filled Plastic "K" Rail Barricades



# Training in Safety / Situational Awareness (No one wants to see this!)



## BACKPACK DEVICE #2 (HOSTAGE DEVICE) INERT TRAINING AID

### VICTIM ACTIVATED

#### FEATURES:

- (2) PVC PIPE BOMBS
- SIMULATED C-4
- ELECTRIC BLASTING CAP
- ANTI TILT SWITCHES
- BREAK WIRE (ANTI REMOVAL)



© INERT PRODUCTS LLC

**Ruin a Bad Guy's Day**



**IF YOU SEE  
SOMETHING  
SAY  
SOMETHING**









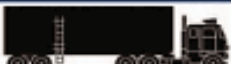
Report Suspicious Activity





# Suspicious Devices?

*Report `Em! Don't Hang Around!*

Threat Description 		Explosives Capacity	Mandatory Evacuation Distance	Shelter-in-Place Zone	Preferred Evacuation Distance
	Pipe Bomb	5 lbs	70 ft	71-1199 ft	+1200 ft
	Suicide Bomber	20 lbs	110 ft	111-1699 ft	+1700 ft
	Briefcase/Suitcase	50 lbs	150 ft	151-1849 ft	+1850 ft
	Car	500 lbs	320 ft	321-1899 ft	+1900 ft
	SUV/Van	1,000 lbs	400 ft	401-2399 ft	+2400 ft
	Small Delivery Truck	4,000 lbs	640 ft	641-3799 ft	+3800 ft
	Container/Water Truck	10,000 lbs	860 ft	861-5099 ft	+5100 ft
	Semi-Trailer	60,000 lbs	1570 ft	1571-9299 ft	+9300 ft

**Point:**

***If you are close enough to the device to see it - THEN YOU ARE TOO CLOSE!***

# Other Considerations



## First Aid & Hydration Stations

- Need to Have Sufficient # of First Aid Trained Personnel
- Volunteer or contracted

# Privacy Tents, Rooms or Trailers

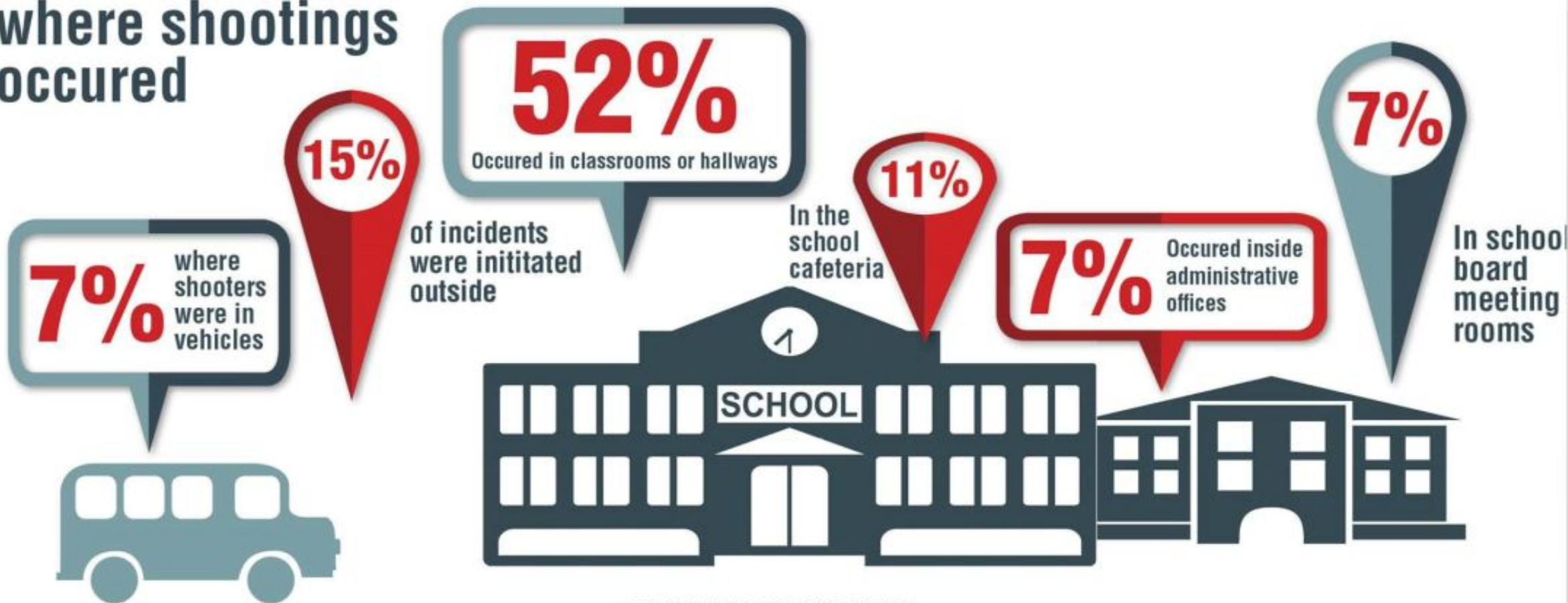


\* For the treatment of injured or dealing with sensitive or confidential issues

# Active Shooter(s)



# SCHOOL LOCATIONS where shootings occured



\* 2014 FBI REPORT ON ACTIVE SHOOTER

## COPING

### WITH AN ACTIVE SHOOTER SITUATION

- Be aware of your environment and any possible dangers
- Take note of the two nearest exits in any facility you visit
- If you are in an office, stay there and secure the door
- Attempt to take the active shooter down as a last resort

*Contact your building management or human resources department for more information and training on active shooter response in your workplace.*

## PROFILE

### OF AN ACTIVE SHOOTER

An active shooter is an individual actively engaged in killing or attempting to kill people in a confined and populated area, typically through the use of firearms.

## CHARACTERISTICS

### OF AN ACTIVE SHOOTER SITUATION

- Victims are selected at random
- The event is unpredictable and evolves quickly
- Law enforcement is usually required to end an active shooter situation



**CALL 911 WHEN IT  
IS SAFE TO DO SO**

# Action Item List - You'll want to:

- Conduct Safety and Security Assessments.
- You may want to consider using experts and outside consultants to do so
- Create Plans based off of those assessments
- Train your employees and staff in emergency procedures
- Consider training with the Security / Law Enforcement, EMS and Fire 1<sup>st</sup> Responders
- Have the necessary trained personnel, tools, equipment and protocols in place at the event(s)

# Questions?



Download from  
**Dreamstime.com**

This watermarked comp image is for previewing purposes only.



ID 8484276

© Petra Roeder | Dreamstime.com